

RAIL SERVED

INDUSTRIAL REDEVELOPMENT OPPORTUNITY



VICINITY MAP



LOCATION



PROPERTY INFORMATION

- 16 miles west of the Snowflake, AZ
- Access to State Route 277
- Adjacent to Apache Railroad
- The Apache Railroad operates from a connection with the BNSF Railway at Holbrook to the Site & Snowflake

Utilities:

- 69 & 12kv Transmission Lines & Substation
- High Capacity Natural Gas Distribution Line
- 5,000 GPM+ Water Pipeline

AVAILABLE MILL SITE REDEVELOPMENT

**+/- 189 ACRES
CAN BE SUBDIVIDED**



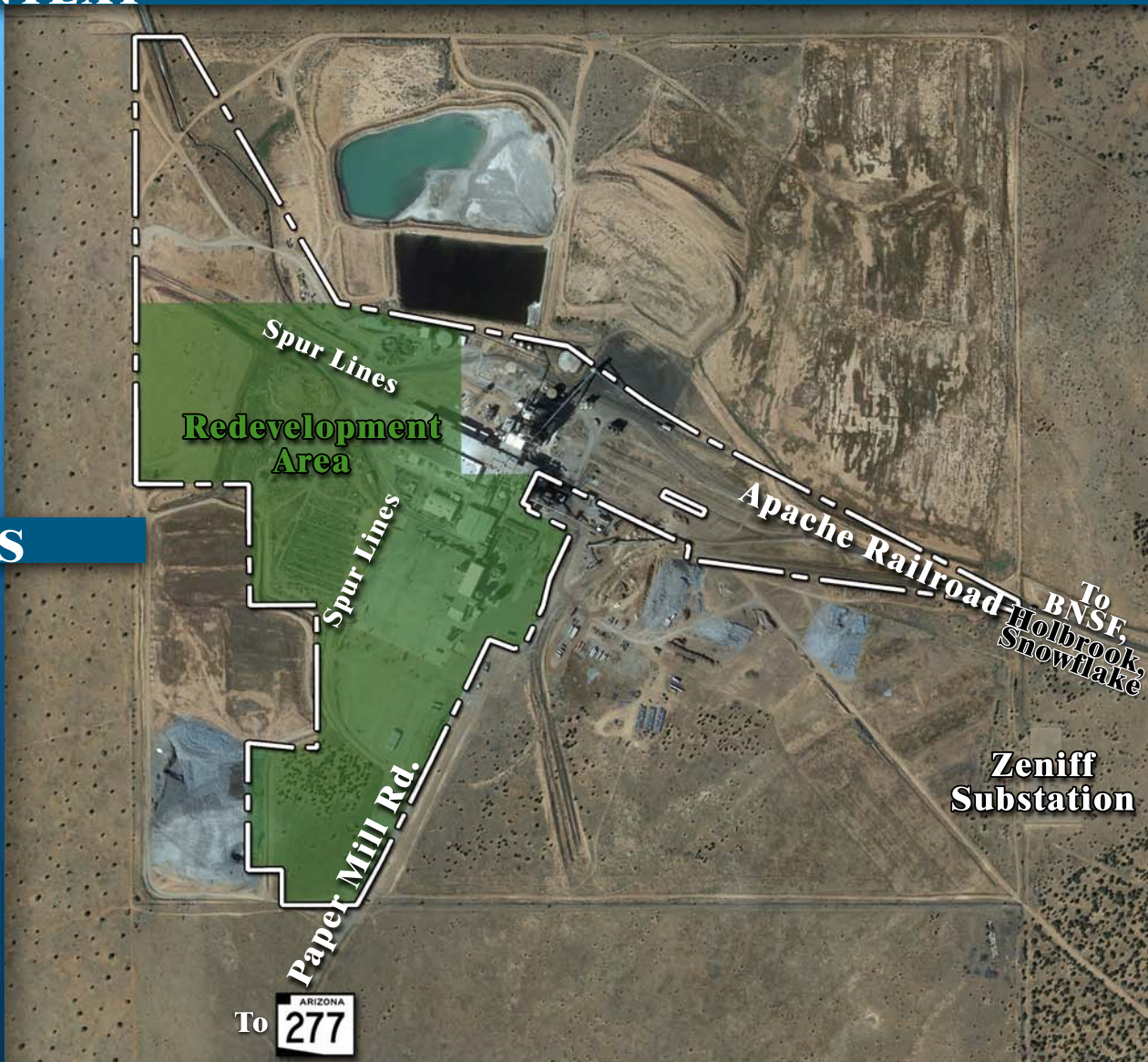
SITE PHOTOS



RAIL SERVED

INDUSTRIAL REDEVELOPMENT OPPORTUNITY

AERIAL CONTEXT



CONTACT US

For more information
please contact:

Ryan Smith

Hackman Capital Partners, LLC
11111 Santa Monica Boulevard
Suite 750

Los Angeles, CA 90025

P (310) 473-8900

rsmith@hackmancapital.com

HACKMAN
CAPITAL